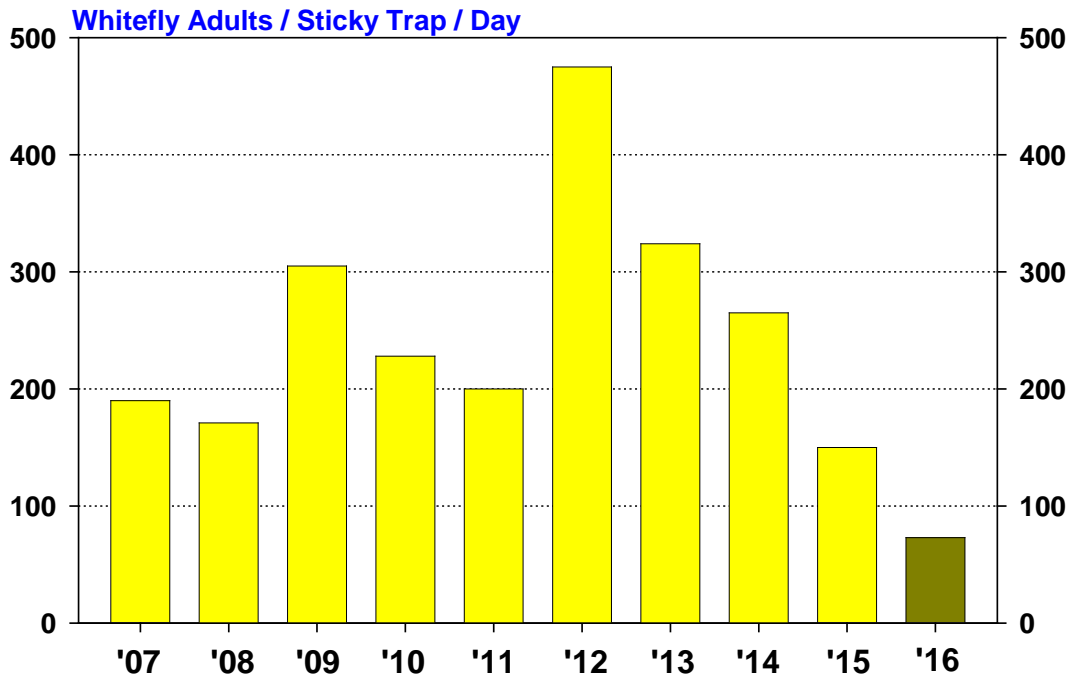
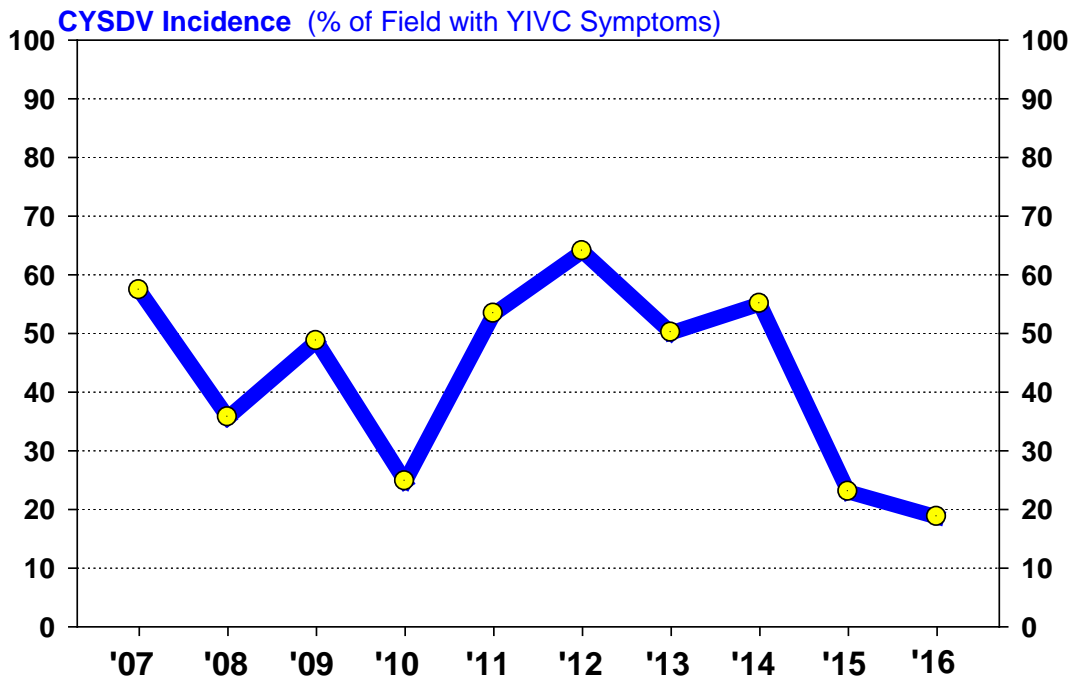


## Whitefly Abundance on Yellow Sticky Traps near Melon Fields Wellton, Tacna, Roll, and Texas Hill (Aug – Oct) 2007-2016

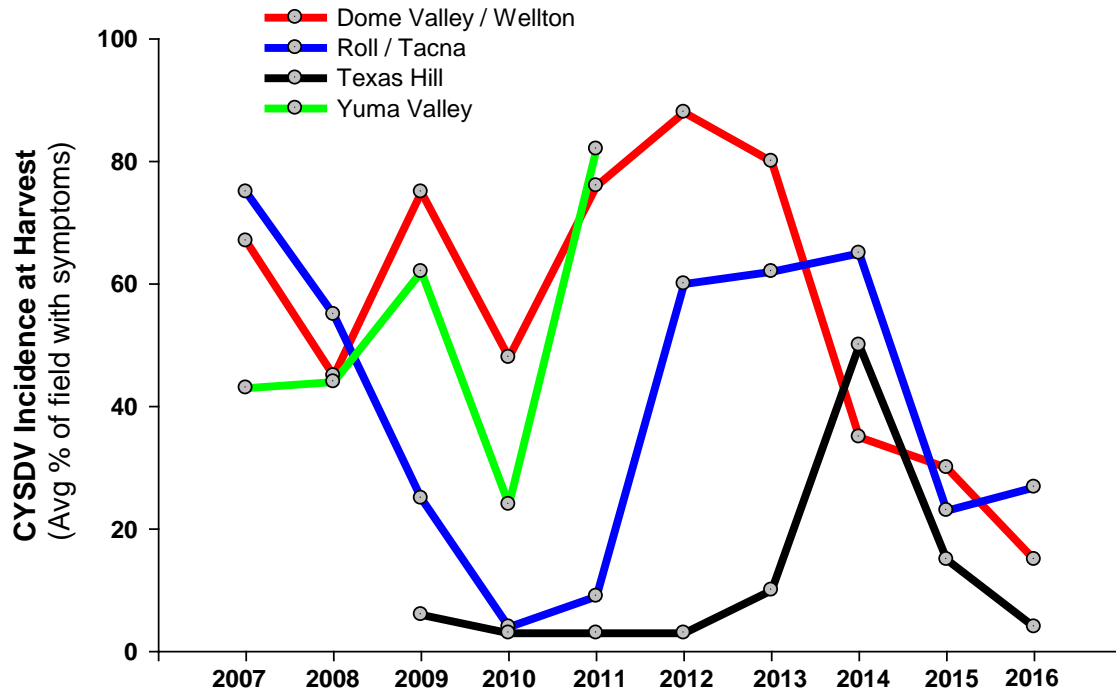


## Areawide CYSDV Incidence in Melon Fields at Harvest, 2007-2016 Dome Valley / Wellton, Tacna/ Roll, Texas Hill and Yuma Valley



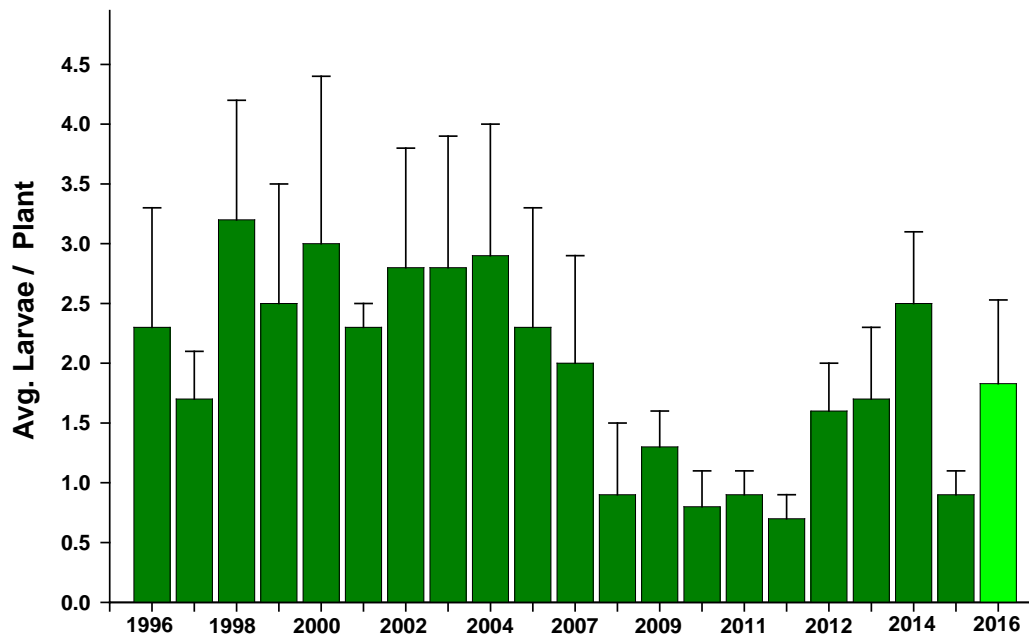
## CYSDV Incidence in Melon Fields at Harvest, 2007-2016

Dome Valley / Wellton, Tacna/ Roll, Texas Hill, and Yuma Valley



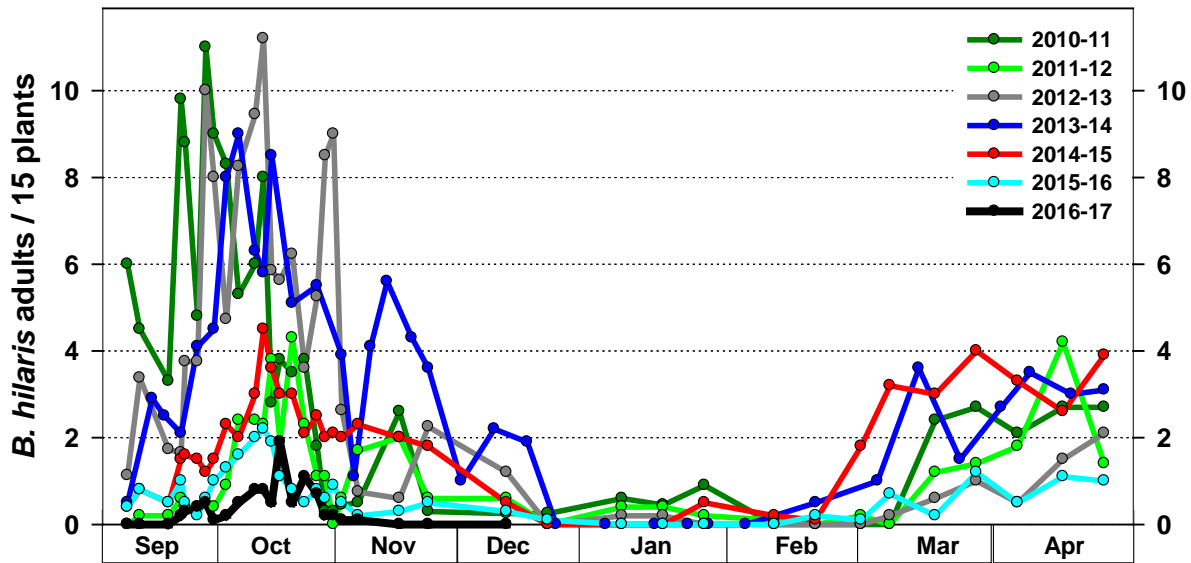
## Beet Armyworm, Cabbage Looper and Corn Earworm Abundance in Non-Treated Lettuce

UA Yuma Ag Center, Sept- Nov, 1996-2016



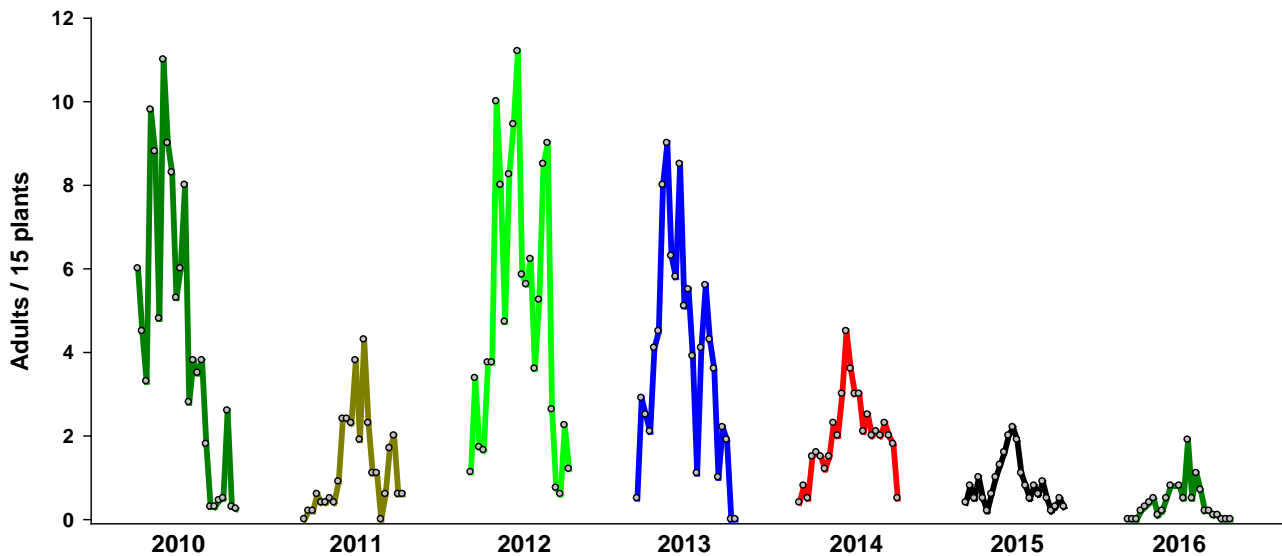
## Seasonal Adult Bagrada Population Abundance on Non-Treated Broccoli

UA Yuma Ag Center, 2010-2016



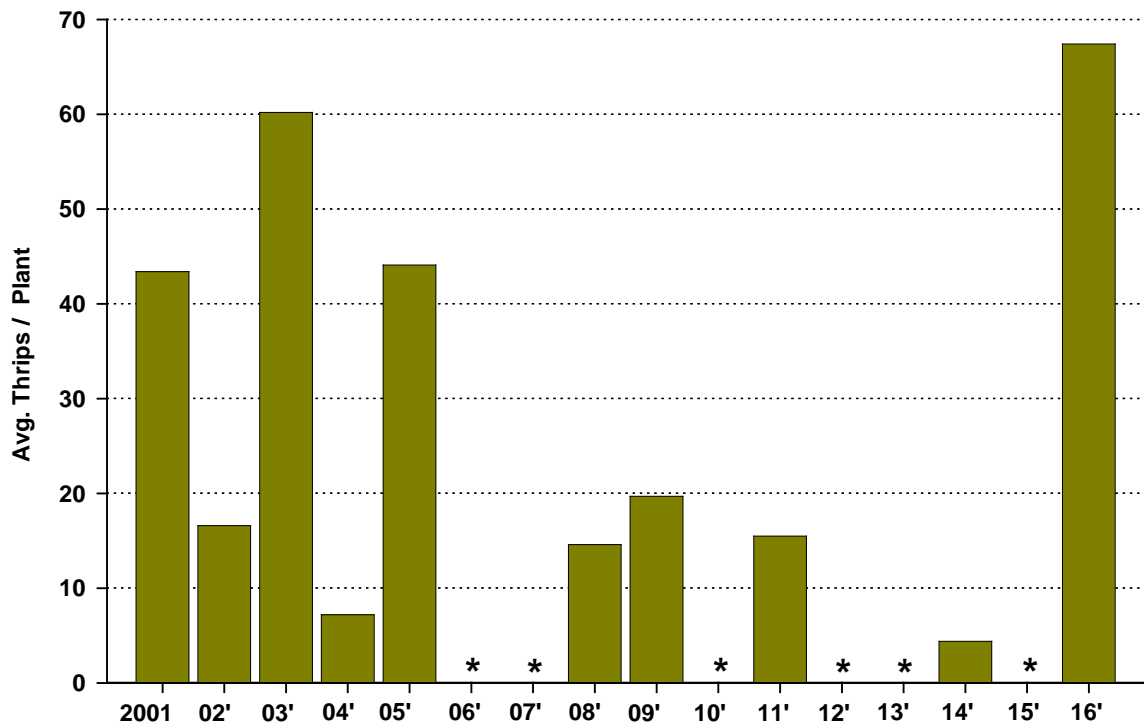
## Fall Abundance of Adult Bagrada Bugs on Non-Treated Broccoli

UA Yuma Ag Center, (Sep-Nov)



### Thrips Abundance on Untreated Fall Lettuce

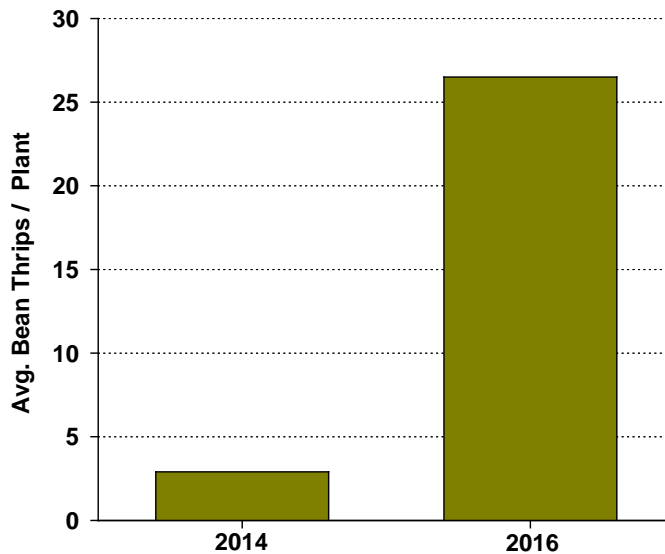
UA Yuma Ag Center ( Oct-Nov) 2001-2016



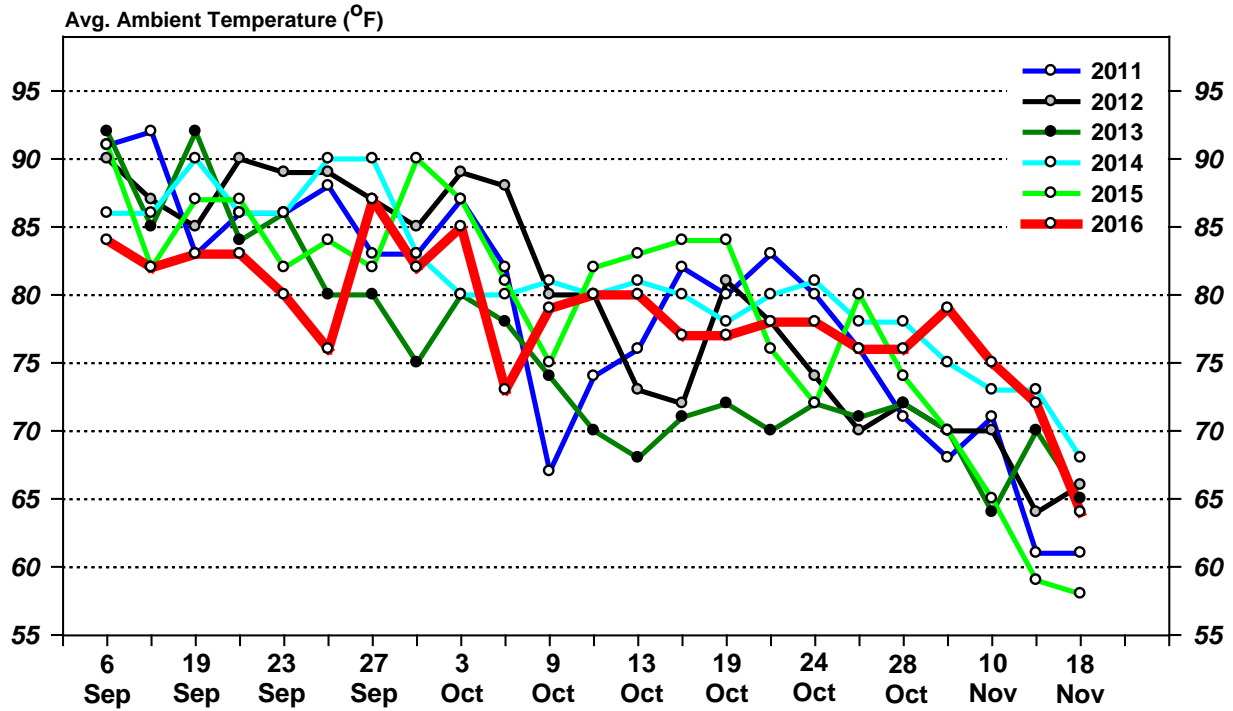
\* Trials not conducted due to light thrips pressure

### Bean Thrips Abundance on Untreated Fall Lettuce

UA Yuma Ag Center (Oct-Nov) 2004 and 2016



## Fall Trends in Average Weekly Temperatures - Yuma Valley



## Ten Year Trend in Average Monthly Temperatures - Yuma Valley

